



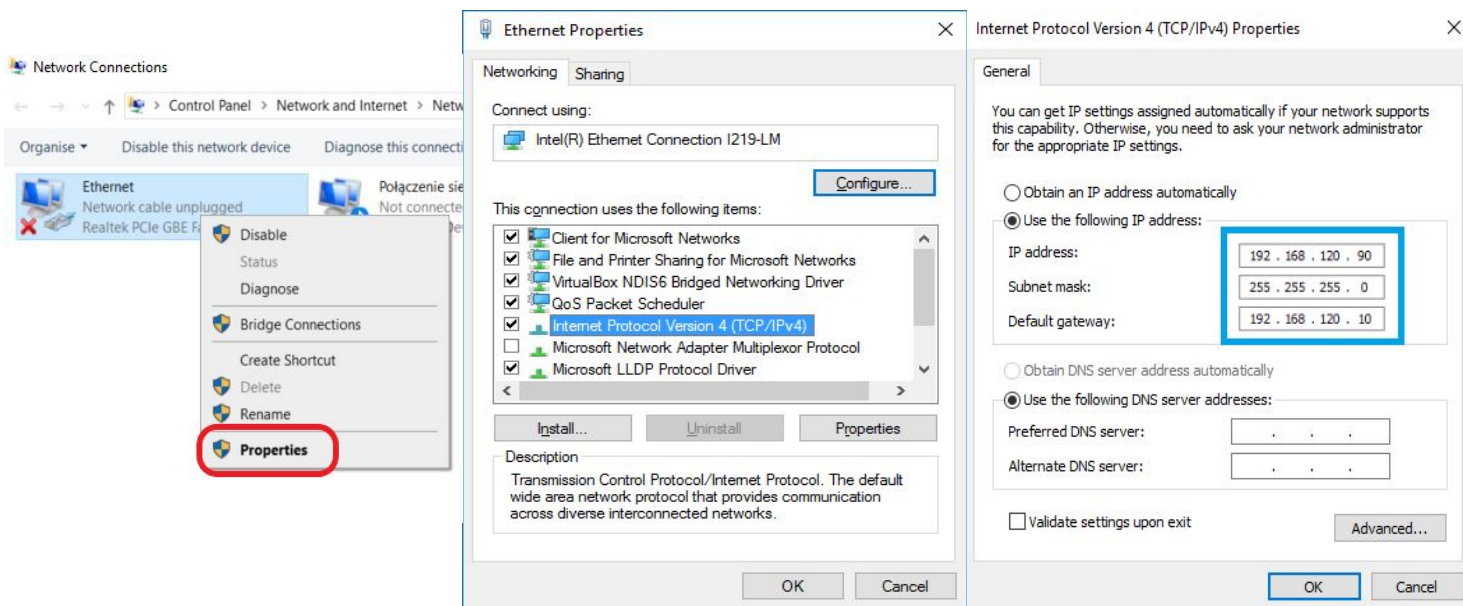
EFENTO GATEWAY

Quick start (Windows)

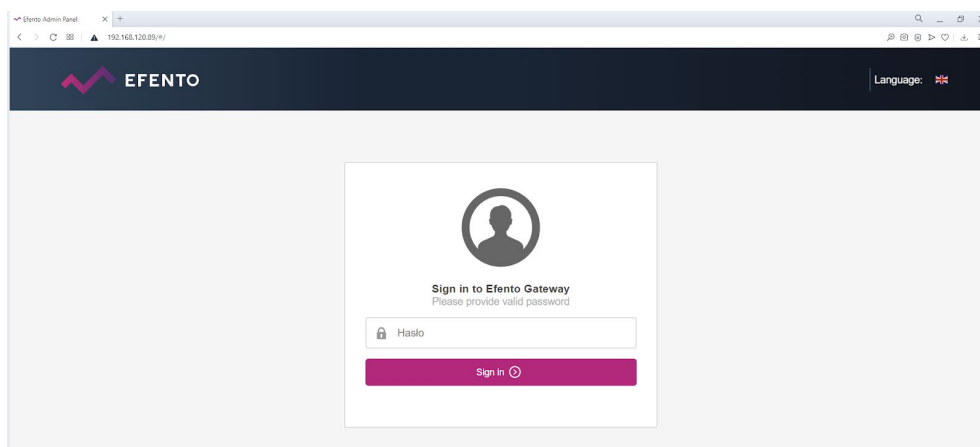
V 2.1

02.09.2019

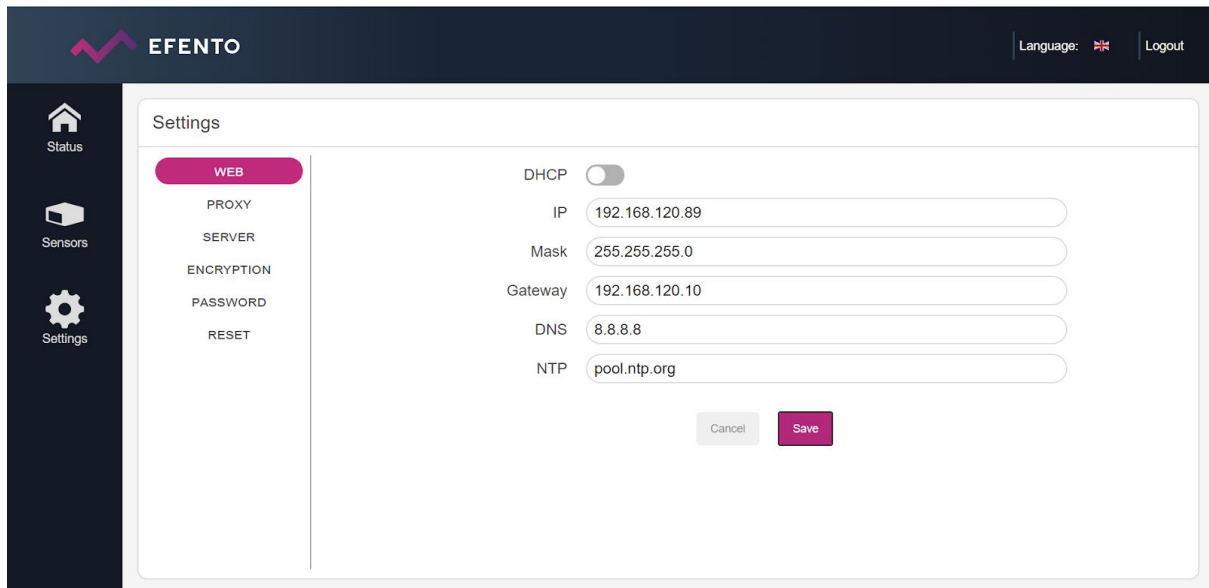
1. Connect the Efento Gateway to the computer with an RJ45 cable and power supply.
2. Change network card settings. To do this, go to the **Control Panel**, choose **Network and Sharing Center** and from the menu on the left side of the window choose **Change adapter settings**. From network connections, select the connection icon, e.g. (**Ethernet or Local Area Connection**), right click on it and select **Properties** change the **IPv4** settings to 192.168.120.90, so your computer is in the the same network as the Efento Gateway



3. Open a web browser and type in the address of Efento Gateway: **192.168.120.89**. Log in to the configuration panel of Efento Gateway (password: **admin**) and go to the **Settings** tab.



4. Change network settings: set a **new address IP** so that the device can work on your target network. Accept changes with the "Save" button.

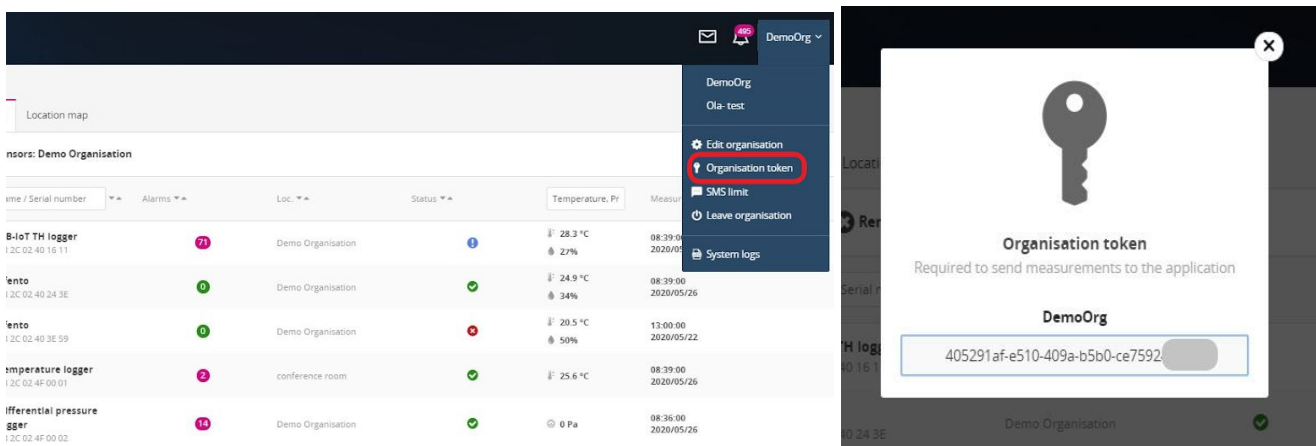


5. Connect Efento Gateway to the switch / router in the target network.

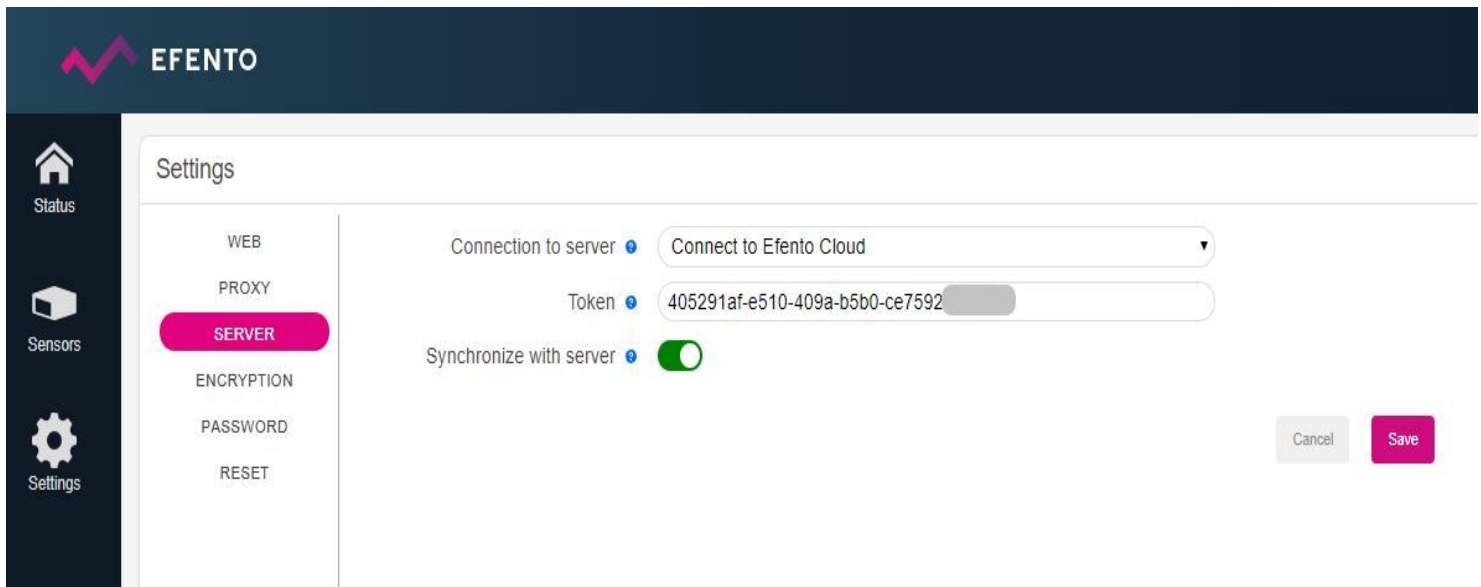
6. Log in to the Efento Gateway configuration panel by entering the **newly assigned IP address** in the browser, go to the **Settings** tab.

7. Open a new browser tab and log in to the Efento Cloud platform (<https://cloud.efento.io>). Register an account following the instructions.

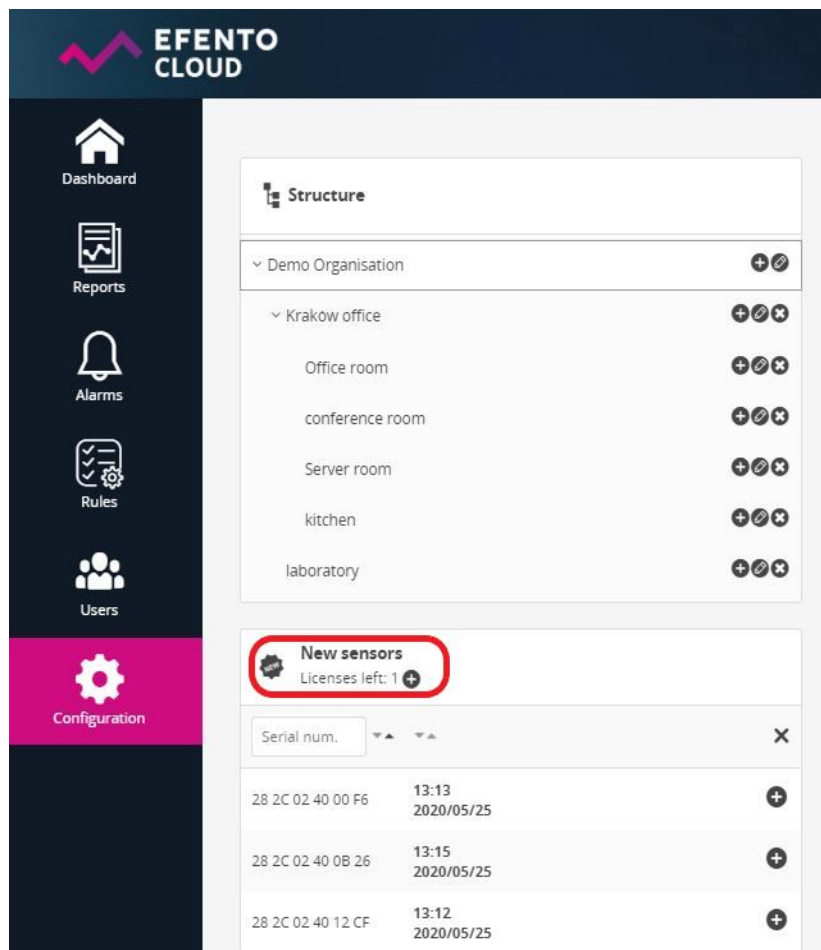
8. Copy the **Organisation token** assigned to your organisation (click on the organisation name in the upper right corner, select "Organization token" and copy the displayed value



9. Paste the Organisation token you copied from the Efento Cloud (in point 8) in the Efento Gateway. Click on the “Settings” tab of Efento Gateway -> “Server”, select “Connect to Efento Cloud” and in the “Token” field, paste the value of the “Organisation Token”.



9. Measurements from sensors will be sent to the Efento Cloud platform, new sensors will appear in the Efento Cloud “Configuration” tab in the “New sensors” section. Click on the sensor you want to add, enter the Cloud Key (you received it in an email confirming your order). and it will be added.



Important: Efento Gateway can be restored to the factory settings by pressing and holding for 10 seconds the button back of the device. When the LEDs start to flash, release the button and wait about 1 minute until only one LED lights up. After this operation, the device will have a factory IP address (192.168.120.89).

A video presenting the installation and configuration of Efento Gateway:

<https://www.youtube.com/watch?v=KuyzQdWRW2Q&feature=youtu.be>